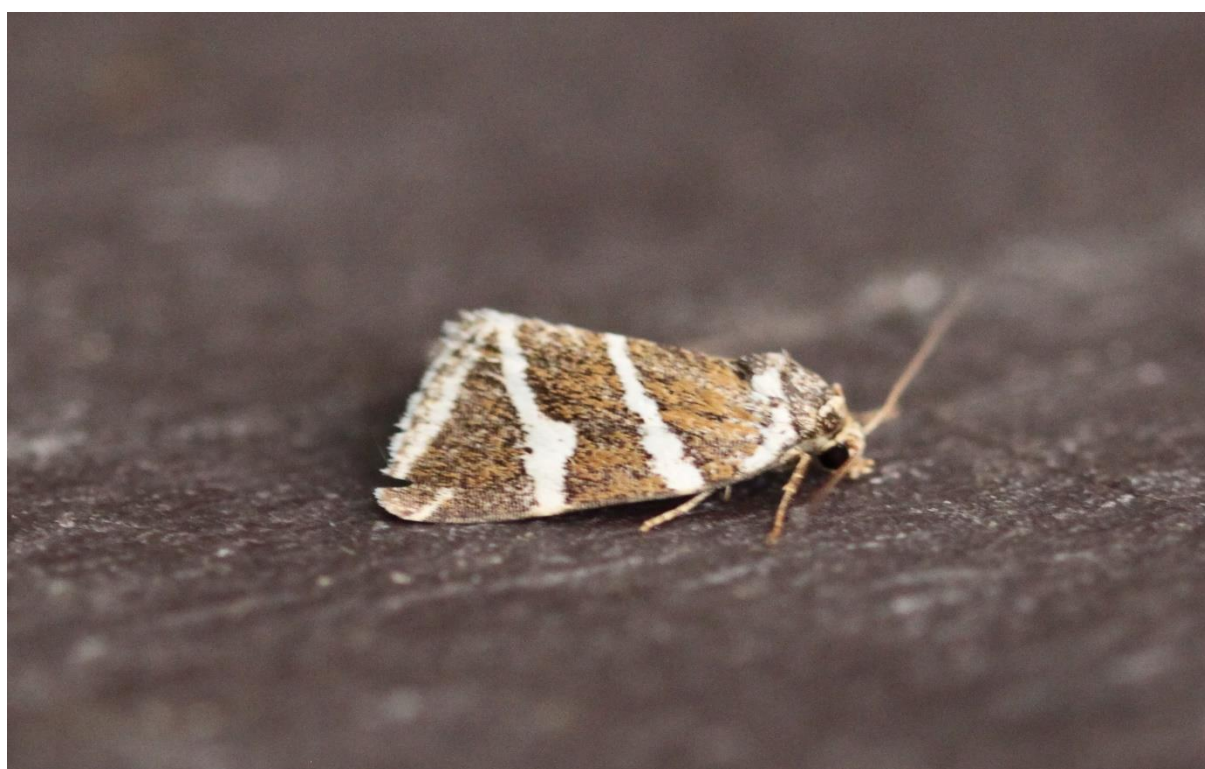


Kingfishers Bridge Nature Reserve

2019 Moth Report



Silver Barred – 26th June 2019

Compiled by Tim Bagworth

Kingfisher's Bridge NR

2019

Moth Report

Compiled by Tim Bagworth

Moth Trapping was undertaken on a total of 20 nights during 2019 at several locations; Upware North Pit SSSI, Home Wood, Office and the Reedbed.

Monthly Trap Dates

January	12 th
February	17 th , 24 th
March	1 st , 22 nd
April	7 th , 14 th , 20 th
May	12 th , 19 th
June	1 st , 9 th , 15 th , 26 th
July	19 th
August	4 th , 10 th , 11 th
September	7 th
October	23 rd
November	
December	

A total of 279 species were recorded during year of these 11 were new to the site and brings the total number of species recorded on the site to 720. The amount of trapping during the year was lower than 2018 to several unforeseen events. I would also like to thank James Moss his help during the year.

Species accounts

The following list follows the nomenclature of the 'Checklist of the Lepidoptera of the British Isles' by D.J.L. Agassiz et al (2013).

3.001 *Triodia sylvina* Orange Swift

Two on 10th August were followed by four on 11th.

3.002 *Korscheltellus lupulina* Common Swift

Recorded from most trap sites on 12th May and 1st, 9th and 15th June with a peak of 72 on 1st June.

3.005 *Hepialus humuli* Ghost Moth

Five were attracted to light on 26th June followed by a single on 19th July.

7.014 *Nematopogon metaxella*

One attracted to light in the Upware North Pit SSSI on 26th June.

12.039 *Monopis crocicapilella*

Two were attracted to light in Home Wood on 10th August.

.* *Yponomeuta sp.*

Three attracted to light in Home Wood on 19th July.

16.001 *Yponomeuta evonymella* Bird-cherry Ermine

A single was attracted to light in Home Wood on 19th July.

17.012 *Ypsolopha sequella*

Two were attracted to light in Home Wood on 10th and 11th August

18.001 *Plutella xylostella* Diamond-backed Moth

One to three attracted to light on four dates; 20th April (one), 26th June (three), 10th (one) and 11th (three) August.

20.022 *Argyresthia bonnetella*

A single attracted to light in Home Wood on 10th August.

28.010 *Hofmannophila pseudospretella* Brown House Moth

A single attracted to light in Home Wood on 15th June.

28.014 *Crassa unitella*

A single attracted to light in Home Wood on 26th June.

29.001 *Diurnea fagella*

Five were attracted to light in Home Wood on 22nd March.

32.009 *Agonopterix purpurea*

Three were attracted to light on 22nd March followed by a single on 10th August.

32.017 *Agonopterix arenella*

A single attracted to light in Home Wood on 11th August.

32.031 *Agonopterix alstromeriana*

Attracted to light on five dates; 22nd March (12), 7th April (one), 19th July (one) and 10th (four) & 11th (five) August.

35.029 *Brachmia inornatella*

A single attracted to light in the Rough on 1st June.

35.109 *Scrobipalpa acuminatella*

Singles attracted to light in the Upware North Pit SSSI on 9th and 15th June. An addition to the site species list.

38.030 *Elachista albifrontella*

Four attracted to light in Home Wood on 1st June.

41.002 *Blastobasis adustella*

34 were attracted to light on 10th followed by 37 on 11th August.

41.003 *Blastobasis lacticolella*

Attracted to light on three dates in June; 9th (one), 15th (two) and 26th (one).

45.004 *Platyptilia gonodactyla*

Triangle Plume

A single attracted to light in Home Wood on 10th August.

45.012 *Stenoptilia pterodactyla*

Brown Plume

A single attracted to light in Home Wood on 19th July.

45.040 *Hellinsia lienigianus*

Mugwort Plume

A single attracted to light in Home Wood on 10th August. An addition to the site species list.

45.043 *Adaina microdactyla*

Hemp Agrimony Plume

A single attracted to light in Upware North Pit SSSI on 19th July.

49.013 *Archips podana*

Large Fruit-tree Tortrix

Two attracted to light on 26th June and 19th July

49.015 *Archips xylosteana*

Variegated Golden Tortrix

Two attracted to light on 26th June.

49.024 *Pandemis corylana*

Chequered Fruit-tree Tortrix

A single was attracted to light in Home Wood on 10th August. An addition to the site species list.

- 49.025 *Pandemis cerasana* Barred Fruit-tree Tortrix
Attracted to light on three nights; 15th (one) & 26th (two) June and 10th August (five).
- 49.026 *Pandemis heparana* Dark Fruit-tree Tortrix
Attracted to light on three nights; 1st (two) & 15th (four) June and 19th July (one).
- 49.037 *Clepsis spectrana* Cyclamen Tortrix
Attracted to light on 15th (three) and 26th June (four).
- 49.039 *Epiphyas postvittana* Light Brown Apple Moth
A single attracted to light in Home Wood on 10th August.
- 49.040 *Lozotaeniodes formosana*
Singles attracted to light on 26th June and 19th July.
- **.* ** *Cnepasia sp.*
Attracted to light on seven nights between 1st June and 11th August, with a maximum count of 91 on 19th July.
- 49.062 *Acleris forrskaleana*
Three were attracted to light on 19th July.
- 49.070 *Acleris rhombana* Rhomboid Tortrix
A single attracted to light in Home Wood on 10th August.
- 49.076 *Acleris cristana*
A single attracted to light in the Office Garden on 2nd March.
- 49.091 *Pseudargyrotoza conwagana*
A single was attracted to light in the Upware North Pit SSSI on 15th June.
- 49.109 *Agapeta hamana*
Attracted to light on 19th July (one) and 10th August (five).
- 49.110 *Agapeta zoegana*
A single was attracted to light in Home Wood on 10th August.
- 49.132 *Cochylidia implicitana*
A single was attracted to light in Home Wood on 10th August. An addition to the site species list.
- 49.139 *Cochylis atricapitana*
Attracted to light on four dates; 1st (eight) & 15th June and 10th (one) & 11th (two) August.
- 49.155 *Hedya salicella*
Four were attracted to light on 26th June.

49.156 *Hedya nubiferana* Marbled Orchard Tortrix

Attracted to light on four nights in June; 1st (two), 9th (three), 15th (nine) and 26th (five)..

49.157 *Hedya pruniana* Plum Tortrix

Attracted to light on three dates; 1st (two) & 15th (one) June and 19th July.

49.161 *Celypha striana*

Attracted to light on five nights; 15th (one) & 26th June, 19th (three) July and singles on 10th & 11th August.

49.166 *Celypha lacunana*

One to five attracted to light between 1st June and 11th August.

49.193 *Endothenia quadrimaculana*

A single was attracted to light in Home Wood on 19th July.

49.215 *Ancylis achatana*

Singles attracted to light in the Upware North Pit SSSI on 26th June and 19th July.

49.255 *Epinotia nisella*

Attracted to light in Home Wood on 10th (five) and 11th (two) August.

49.264 *Eucosma obumbratana*

Singles attracted to light on 15th June, 19th July and 11th August.

49.275 *Eucosma conterminana*

A single attracted to light in Home Wood on 10th August.

49.281 *Gypsonoma sociana*

A single attracted to light in Home Wood on 10th August.

49.285 *Epiblema scutulana*

A single attracted to light in Home Wood on 15th June.

49.288 *Epiblema foenella*

A single attracted to light in the Office Garden on 19th July.

49.292 *Notocelia cynosbatella*

Six attracted to light on 1st June.

49.304 *Clavigesta purdeyi* Pine Leaf-mining Moth

A single attracted to light in the Upware North Pit SSSI on 11st August. An addition to the site species list.

49.338 *Cydia pomonella* Codling Moth

Two attracted to light in the Office Garden on 19th July.

49.341 *Cydia splendana*

Three attracted to light in Home Wood on 10th and 11th August.

49.344 *Cydia inquinatana*

A single attracted to light in Home Wood on 15th June.

50.001 *Cossus cossus*

Goat Moth

Two found in the Upware North Pit SSSI on 14th May.

50.003 *Phragmataecia castaneae*

Reed Leopard

Attracted to light on four dates in June; 1st (one), 9th (one), 15th (five) and 26th (13).

52.002 *Sesia apiformis*

Hornet Moth

A single was found emerging by Upware North Pit SSSI on 1st June. An addition to the site species list.

62.006 *Galleria mellonella*

Wax Moth

A single attracted to light in Home Wood on 11th August.

62.021 *Oncocera semirubella*

Rosy-striped Knot-horn

A single attracted to light in Home Wood on 11th August.

62.036 *Acrobasis suavella*

Attracted to light on three nights; 19th July (one) and 10th (two) & 11th July (one).

62.042 *Myelois circumvolute*

Thistle Ermine

Attracted to light on 1st (two) and 15th June (one).

62.054 *Homoeosoma sinuella*

Singles attracted to light on 19th July and 10th August.

62.058 *Phycitodes binaevella*

A single attracted to light in Home Wood on 26th June.

62.077 *Endotricha flammealis*

Attracted to light on 19th July (eight) and 10th August (one).

63.005 *Pyrausta despicata*

Attracted to light on 26th June (two) and 10th (one) & 11th August (six).

63.017 *Anania lancealis*

A single attracted to light in the Upware North Pit SSSI on 26th June.

63.018 *Anania coronata*

A single attracted to light on 26th June was followed by two on 19th July.

63.020 *Anania perlucidalis*

A single attracted to light on 1st June was followed by five on 26th.

63.025 *Anania hortulata*

Small Magpie

One to three were attracted to light on five dates between 1st June and 19th July.

63.028 *Ostrinia nubilalis*

European Corn-borer

Two attracted to light on 26th June were followed by a single on 19th July.

63.033 *Udea lutealis*

A single attracted to light in Home Wood on 11th August.

63.038 *Pleuroptya ruralis*

Mother of Pearl

Attracted to light on 19th July (six) and 10th (11) & 11th August (six).

63.057 *Evergestis forficalis*

Garden Pebble

Two attracted to light on 10th August followed by a single on 11th.

63.058 *Evergestis extimalis*

A single attracted to light in Home Wood on 19th July.

63.064 *Scoparia ambigualis*

A single attracted to light in the Upware North Pit SSSI on 15th June.

63.067 *Eudonia lacustrata*

Seven were attracted to light on 19th July.

63.072 *Eudonia delunella*

A single attracted to light in Home Wood on 10th August. An addition to the site species list.

63.074 *Eudonia mercurella*

A single attracted to light 26th June was followed by two on 19th July.

63.075 *Eudonia pallida*

Singles were attracted to light on 10th and 11th August.

63.079 *Calamotropha paludella*

A single was attracted to light in the Office Garden on 19th July.

63.080 *Chrysoteuchia culmella*

Garden Grass-venerer

Attracted to light 26th June (49), 19th July (18) and 10th August (one).

63.086 *Crambus lathoniellus*

Hook-streak Grass-venerer

Attracted to light on four dates in June; 1st (five), 9th (one), 15th (four) and 26th (three).

- 63.088 *Crambus perlella* Satin Grass-veneer
 Twenty were attracted to light on 26th June followed by one on 10th and two on 11th August.
- 63.089 *Agriphila tristella*
 Attracted to light on 19th July (two) and 10th (nine) & 11th August (ten).
- 63.092 *Agriphila selasella*
 Six attracted to light on 10th August were followed by two the following night.
- 63.093 *Agriphila straminella* Straw Grass-veneer
 Three attracted to light on 10th August were followed by four the following night.
- 63.095 *Agriphila geniculea*
 Singles attracted to light on 10th and 11th August.
- 63.102 *Catoptria falsella*
 Attracted to light on 19th July (one), 10th (eight) & 11th August (one) and 7th September (two).
- 63.114 *Elophila nymphaeata* Brown China-mark
 Two were attracted to light in the Upware North Pit SSSI on 26th June and 19th July.
- 63.115 *Acentria ephemerella* Water Veneer
 A single attracted to light in Home Wood on 10th August.
- 63.116 *Cataclysta lemnata* Small China-mark
 Three were attracted to light on 15th June.
- 63.117 *Parapoynx stratiotata* Ringed China-mark
 One and twos attracted to light on 26th June, 19th July and 10th 7 11th August.
- 63.120 *Schoenobius gigantella*
 Four attracted to light on 26th June.
- 65.008 *Thyatira batis* Peach Blossom
 A single was attracted to light in the Office Garden on 26th June.
- 65.010 *Tethea ocularis* Figure of Eighty
 A single was attracted to light in the Office Garden on 26th June.
- 66.007 *Lasiocampa quercus* Oak Eggar
 Two were attracted to light in Home Wood on 19th July.
- 66.010 *Euthrix potatoria* Drinker
 A single attracted to light in Home Wood on 10th August.

- 69.002 *Smerinthus ocellate* Eyed Hawk-moth
Singles were attracted to light on 12th May & 15th and 26th June along with two on 1st June.
- 69.003 *Laothoe populi* Poplar Hawk-moth
One to six attracted to light on seven dates between 12th May and 11th August.
- 69.006 *Sphinx ligustri* Privet Hawk-moth
Singles attracted to light on 1st and 26th June were followed by two on 19th July.
- 69.010 *Macroglossum stellatarum* Hummingbird Hawk-moth
A single was seen in the Office Garden on 10th August.
- 69.016 *Deilephila elpenor* Elephant Hawk-moth
Singles at light on 1st & 15th June were followed by three on 26th June and two on 19th July.
- 70.004 *Idaea rusticata* Least Carpet
Attracted to light on three nights; 26th June (one), 19th July (17) and 10th August (one).
- 70.006 *Idaea fuscovenosa* Dwarf Cream Wave
Two were attracted to light on 26th June and 19th July.
- 70.008 *Idaea seriata* Small Dusty Wave
A single was attracted to light in the Office Garden on 26th June.
- 70.011 *Idaea dimidiata* Single-dotted Wave
A single attracted to light in Home Wood on 15th June.
- 70.012 *Idaea trigeminata* Treble Brown Spot
Singles attracted to light on 15th & 26th June were followed by nine on 19th July.
- 70.016 *Idaea aversata* Riband Wave
Attracted to light on five nights between 1st June and 11th August, with a maximum of right on 19th July.
- 70.029 *Timandra comae* Blood-vein
A single attracted to light in Home Wood on 15th June.
- 70.045 *Scotopteryx chenopodiata* Shaded Broad-bar
Two were attracted to light on 19th July.
- 70.053 *Xanthorhoe designata* Flame Carpet
A single was attracted to light in the Upware North Pit SSSI on 15th June. An addition to the site species list.
- 70.054 *Xanthorhoe montanata* Silver-ground Carpet
A single was attracted to light in the Office Garden on 26th June.

- 70.059 *Camptogramma bilineata* Yellow Shell
Singles attracted to light on 4th and 10th August.
- 70.061 *Epirrhoe alternata* Common Carpet
Attracted to light on eight nights between 12th May and 11th August, with a maximum count of 22 on 10th August.
- 70.087 *Cosmorhoe ocellate* Purple Bar
One to nine attracted to light on five dates between 1st June and 11th August.
- 70.093 *Gandaritis pyraliata* Barred Straw
15 were attracted to light on 26th June followed by two on 19th July.
- 70.095 *Chloroclysta siterata* Red-green Carpet
Two were attracted to light in the Office Garden on 23rd October.
- 70.097 *Dysstroma truncata* Common Marbled Carpet
Singles attracted to light on 1st June and 23rd October along with two on 9th June.
Attracted to light on five dates; 12th (three) & 19th May (two) and 1st (six) & 15th June (one).
- 70.107 *Epirrita dilutata* November Moth
A single attracted to light on 23rd October.
- **.* ** *Epirrita sp* November Moth agg.
Seven attracted to light on 23rd October.
- 70.118 *Philereme vetulata* Brown Scallop
Two were attracted to light on 26th June.
- 70.131 *Mesotype didymata* Twin-spot Carpet
A single was attracted to light in the Office Garden on 26th June.
- 70.138 *Perizoma flavofasciata* Sandy Carpet
A single was attracted to light in Home Wood on 9th June.
- 70.141 *Gymnoscelis rufifasciata* Double-striped Pug
Singles were attracted to light in Home Wood on 22nd March and 12th May.
- 70.144 *Pasiphila rectangulata* Green Pug
A single was attracted to light in the Upware North Pit SSSI on 9th June.
- 70.173 *Eupithecia centaureata* Lime-speck Pug
Singles attracted to light on 1st June, 19th July, 10th August and 7th September.

- 70.183 *Eupithecia vulgata* Common Pug
Singles attracted to light on 1st and 9th June.
- 70.184 *Eupithecia exiguata* Mottled Pug
Two were attracted to light on 1st and 15th June.
- 70.192 *Aplocera plagiata* Treble-bar
Singles were attracted to light on 1st and 15th June.
- 70.200 *Acasis viretata* Yellow-barred Brindle
A single attracted to light on the Rough on 1st June.
- 70.207 *Lomaspilis marginata* Clouded Border
One to six attracted to light on five dates between 1st June and 19th July.
- 70.208 *Ligdia adustata* Scorched Carpet
Singles were attracted to light on 12th May and 1st June, followed by two on 19th July.
- 70.218 *Chiasmia clathrate* Latticed Heath
Five were attracted to light on 1st June and 10th August along with two on 19th July.
- 70.224 *Plagodis dolabraria* Scorched Wing
Two were attracted to light on 1st June followed by a single on 26th.
- 70.226 *Opisthograptis luteolata* Brimstone Moth
One to five attracted to light on five dates between 19th May and 7th September.
- 70.227 *Epione repandaria* Bordered Beauty
A single was attracted to light in the Upware North Pit SSSI on 19th July.
- 70.234 *Ennomos alniaria* Canary-shouldered Thorn
Singles attracted to light on 10th and 11th August.
- 70.237 *Selenia dentaria* Early Thorn
A single was attracted to light in the Office Garden on 7th April.
- 70.239 *Selenia tetralunaria* Purple Thorn
A single was attracted to light in Home Wood on 19th July.
- 70.241 *Crocallis elinguaris* Scalloped Oak
Attracted to light on four dates; 26th June (one), 19th July (four) and 10th (five) & 11th August (one).
- 70.243 *Ourapteryx sambucaria* Swallow-tailed Moth
A single was attracted to light in the Upware North Pit SSSI on 19th July.

- 70.245 *Alsophila aescularia* March Moth
19 were attracted to light on 22nd March.
- 70.247 *Phigalia pilosaria* Pale Brindled Beauty
Attracted to light on 12th January (one), 17th February (two) and 22nd March (one).
- 70.251 *Biston strataria* Oak Beauty
A single was attracted to light in the Office Garden on 24th February.
- 70.252 *Biston betularia* Peppered Moth
A single attracted to light in the Reedbed on 26th June.
- 70.255 *Agriopis marginaria* Dotted Border
Five were attracted to light on 17th February followed by two on 22nd March.
- 70.258 *Peribatodes rhomboidaria* Willow Beauty
Attracted to light on six nights between 19th May and 10th August with a maximum count of nine on 15th June.
- 70.265 *Alcis repandata* Mottled Beauty
Five were attracted to light on 15th June followed by six on 26th.
- 70.268 *Hypomecis punctinalis* Pale Oak Beauty
Four were attracted to light on 15th June.
- 70.270 *Ectropis crepuscularia* Engrailed
Two were attracted to light on 22nd March and 26th June.
- 70.277 *Cabera pusaria* Common White Wave
A single was attracted to light in Home Wood on 11th August.
- 70.278 *Cabera exanthemata* Common Wave
Singles were attracted to light on 26th June and 10th August followed by two on 11th August.
- 70.280 *Lomographa temerata* Clouded Silver
Attracted to light in the Office Garden on 26th June (two) and 19th July (one).
- 70.283 *Campaea margaritaria* Light Emerald
Attracted to light on three nights between 1st and 15th June with a maximum count of 21 on 1st June, followed by up to five on four nights between 10th August and 7th September.
- 70.305 *Hemithea aestivaria* Common Emerald
A single was attracted to light in the Office Garden on 26th June.
- 71.001 *Thaumetopoea processionea* Oak Processionary
A single was attracted to light in Home Wood on 10th August. An addition to the site species list.

- 71.012 *Notodonta dromedarius* Iron Prominent
A single was attracted to light in Home Wood on 11th August.
- 71.013 *Notodonta ziczac* Pebble Prominent
Singles attracted to light on 25th May and 1st June followed by two on 11th August.
- 71.017 *Pheosia tremula* Swallow Prominent
A single was attracted to light in Home Wood on 11th August.
- 71.020 *Pterostoma palpina* Pale Prominent
A single was attracted to light in the Office Garden on 1st June.
- 71.021 *Ptilodon capucina* Coxcomb Prominent
Singles were attracted to light on 1st June, 19th July and 10th & 11th August.
- 71.025 *Phalera bucephala* Buff-tip
A single was attracted to light in the Office Garden on 19th July.
- 71.027 *Clostera curtula* Chocolate-tip
A single was attracted to light in Home Wood on 25th May.
- 72.002 *Rivula sericealis* Straw Dot
Attracted to light on six nights between 1st June and 11th August with a maximum count of eight on 11st August.
- 72.003 *Hypena proboscidalis* Snout
Singles were attracted to light on 1st & 9th June followed by three on 26th. There were then a further two on both 11th August and 7th September.
- 72.009 *Leucoma salicis* White Satin Moth
A single was attracted to light in the Office Garden on 19th July.
- 72.010 *Lymantria monacha* Black Arches
Two were attracted to light 19th July followed by another two on 10th August.
- 72.012 *Euproctis chrysorrhoea* Brown-tail
A single attracted to light on 26th June was followed by two on 19th July.
- 72.013 *Euproctis similis* Yellow-tail
Attracted to light on three dates; 19th July (four) and 10th (one) & 11th August (two).
- 72.015 *Calliteara pudibunda* Pale Tussock
A single was attracted to light in the Office Garden on 19th May.

- 72.019 *Spilosoma lutea* Buff Ermine
 Ones and twos attracted to light on four dates between 1st June and 19th July.
- 72.020 *Spilosoma lubricipeda* White Ermine
 Attracted to light on three nights; 1st (11) & 15th June (three) and 10th August (one).
- 72.022 *Diaphora mendica* Muslin Moth
 Two attracted to light on 12th May.
- 72.024 *Phragmatobia fuliginosa* Ruby Tiger
 18 attracted to light on 19th July were followed in August by a single on 10th and two on 11th.
- 72.026 *Arctia caja* Garden Tiger
 A single was attracted to light in Home Wood on 10th August.
- 72.044 *Eilema griseola* Dingy Footman
 Attracted to light on three dates; 19th July (26) and 10th (four) & 11th August (eight).
- 72.045 *Eilema lurideola* Common Footman
 Following a single on 15th June 40 were attracted to light on 19th July.
- 72.046 *Eilema complana* Scarce Footman
 Singles were attracted to light on 26th June and 10th & 11th August along with 33 on 19th July.
- 72.049 *Eilema sororcula* Orange Footman
 A single was attracted to light in the Office Garden on 19th May.
- 72.069 *Laspeyria flexula* Beautiful Hook-tip
 Singles attracted to light on 15th June and 19th July.
- 73.001 *Abrostola tripartita* Spectacle
 Attracted to light on 26th June (one) and 10th (three) & 11th August (two).
- 73.002 *Abrostola triplasia* Dark Spectacle
 Singles attracted to light on 1st June and 11th August.
- 73.010 *Macdunnoughia confuse* Dewick's Plusia
 A single was attracted to light in Home Wood on 11th August.
- 73.012 *Diachrysia chrysitis* Burnished Brass
 Attracted to light on eight nights between 19th May and 7th September, with a maximum of 11 on 10th August.
- 73.015 *Autographa gamma* Silver Y
 Attracted to light on three nights; 10th (three) & 11th August (two) and 7th September (one).

- 73.022 *Plusia festucae* Gold Spot
 Singles attracted to light on 26th June and 10th & 11th August.
- 73.027 *Deltote bankiana* Silver Barred
 A single attracted to light in the Reedbed on 26th June. An addition to the site species list.
- 73.032 *Colocasia coryli* Nut-tree Tussock
 A single was attracted to light in Home Wood on 19th July.
- 73.035 *Simyra albovenosa* Reed Dagger
 A single was attracted to light in the Office Garden on 19th July.
- 73.039 *Acronicta aceris* Sycamore
 A single was attracted to light in Home Wood on 19th July. An addition to the site species list.
- **.* ** *Acronicta tridens / psi* Dark / Grey Dagger
 A single was attracted to light in the Upware North Pit SSSI on 10th August.
- 73.045 *Acronicta rumicis* Knot Grass
 Following two at light on 26th June a single was at light on 19th July.
- 73.046 *Subacronicta megacephala* Poplar Grey
 A single was attracted to light in the Office Garden on 9th June.
- 73.047 *Craniophora ligustri* Coronet
 A single was attracted to light in Home Wood on 1st June.
- 73.062 *Amphipyra pyramidea* Copper Underwing
 Two attracted to light on 11th August.
- 73.064 *Amphipyra tragopoginis* Mouse Moth
 Three were attracted to light on 1st August followed by a single the following night.
- 73.068 *Allophyes oxyacanthae* Green-brindled Crescent
 Six attracted to light on 23rd October.
- 73.082 *Cryphia algae* Tree-lichen Beauty
 Attracted to light on 10th (three) and 11th August (six).
- 73.092 *Caradrina morpheus* Mottled Rustic
 Attracted to light on five nights between 1st June and 19th July with a maximum of 20 on 26th June.
- 73.095 *Caradrina clavipalpis* Pale Mottled Willow
 A single attracted to light in the Upware North Pit SSSI on 26th June.

- 73.096 *Hoplodrina octogenarian* Uncertain
 Attracted to light on four nights; 15th (12) & 26th June (12), 19th July (25) and 10th August (one).
- 73.097 *Hoplodrina blanda* Rustic
 Attracted to light on four nights; 26th June (13), 19th July (84) and 10th (three) & 11th August (one).
- 73.099 *Hoplodrina ambigua* Vine's Rustic
 Attracted to light on seven nights between 1st June and 7th September with a maximum of 24 on 1st June.
- 73.101 *Charanyca trigrammica* Treble Lines
 Attracted to light on five nights between 12th May and 15th June with a maximum of 45 on 1st June.
- 73.102 *Rusina ferruginea* Brown Rustic
 Attracted to light on four nights between in June; 1st (three), 9th (four), 15th (four) and 26th (11).
- 73.109 *Thalpophila matura* Straw Underwing
 Attracted to light on three nights; 10th (35) & 11th August (20) and 7th September (one).
- 73.120 *Eremobia ochroleuca* Dusky Sallow
 11 were attracted to light on 19th July followed by a single on 10th August.
- 73.123 *Hydraecia micacea* Rosy Rustic
 A single attracted to light on 19th July was followed in August by two on 10th and five the following night.
- 73.128 *Amphipoea oculatea* Ear Moth
 A single attracted to light in the Upware North Pit SSSI on 10th August. Confirmed by dissection.
- 73.131 *Luperina testacea* Flounced Rustic
 Attracted to light on three nights; 10th (29) & 11th August (22) and 7th September (eight).
- 73.134 *Rhizedra lutosa* Large Wainscot
 A single attracted to light on 7th September was followed by six on 23rd October.
- 73.144 *chortodes pygmina* Small Wainscot
 A single was attracted to light in the Office Garden on 19th July.
- 73.151 *Globia sparganii* Webb's Wainscot
 A single attracted to light in the Upware North Pit SSSI on 10th August.
- 73.157 *Apamea anceps* Large Nutmeg
 A single was attracted to light in the Office Garden on 26th June.
- 73.158 *Apamea sordens* Rustic Shoulder-knot
 Attracted to four nights; 12th May (one) and 1st (11), 9th (four) and 15th June (one).

- 73.159 *Apamea unanimitis* Small Clouded Brindle
A single was attracted to light in the Office Garden on 15th June.
- 73.162 *Apamea monoglypha* Dark Arches
Attracted to light on six nights between 1st June and 10th August with a peak count of 17 on 26th June.
- 73.163 *Apamea lithoxylaea* Light Arches
Eight were attracted to light on 26th June followed by three on 19th July.
- 73.168 *Lateroligia ophiogramma* Double Lobed
A single was attracted to light in the Office Garden on 19th July.
- **.* ** *Mesapamea* Common Rustic Agg.
Attracted to light on three nights; 19th July (18) and 10th (24) & 11th August (34).
- 73.172 *Mesoligia furuncula* Cloaked Minor
Attracted to light on 10th (ten) and 11th August (five).
- **.* ** *Oligia sp.* Marbled Minor agg.
Attracted to light on four nights in June; 1st (63), 9th (27), 15th (six) and 26th (seven).
- 73.176 *Oligia fasciuncula* Middle-barred Minor
Three were attracted to light on 1st June.
- 73.180 *Tiliacea aurago* Barred Sallow
Two were attracted to light in the Office Garden on 23rd October.
- 73.182 *Xanthia icteritia* Sallow
Four were attracted to light in the Office Garden on 23rd October.
- 73.186 *Agrochola lychnidis* Beaded Chestnut
Three were attracted to light on 23rd October.
- 73.189 *Agrochola lota* Red-line Quaker
Two were attracted to light in the Office Garden on 23rd October.
- 73.190 *Agrochola macilenta* Yellow-line Quaker
Six were attracted to light on 23rd October.
- 73.192 *Agrochola circellaris* Brick
Four were attracted to light on 23rd October.
- 73.194 *Conistra vaccinii* Chestnut
A single was attracted to light on 1st March followed by 18 on 22nd. A Further single was attracted to light on 23rd October.

- 73.195 *Conistra ligula* Dark Chestnut
A single attracted to light in Home Wood on 22nd March.
- 73.201 *Lithophane socia* Pale Pinion
A single attracted to light in the Upware North Pit SSSI on 26th June.
- 73.210 *Eupsilia transversa* Satellite
Singles attracted to light on 17th February, 22nd March, 7th April and 23rd October.
- 73.216 *Cosmia trapezina* Dun-bar
14 were attracted to light on 19th July followed in August by seven on 10th and four on 11th.
- 73.233 *Phylapora nigra* Black Rustic
15 were attracted to light on 23rd October.
- 73.242 *Orthosia incerta* Clouded Drab
Following a single at light on 24th February 29 were at light on 22nd March and three on 7th April.
- 73.244 *Orthosia cerasi* Common Quaker
Attracted to light on four nights; 24th February (one), 1st (two) & 22nd March (72) and 7th April (nine).
- 73.245 *Orthosia cruda* Small Quaker
12 attracted to light on 22nd March were followed by four on 7th April.
- 73.247 *Orthosia gracilis* Powdered Quaker
Singles were attracted to light on 7th & 14th April and 12th May.
- 73.249 *Orthosia gothica* Hebrew Character
Attracted to light on six nights between 24th February and 12th May with a peak of 41 on 22nd March.
- 73.250 *Anorthoa munda* Twin-spotted Quaker
Attracted to light on four nights; 24th February (one), 1st (one) & 22nd March (15) and 7th April (two).
- 73.253 *Tholera decimalis* Feathered Gothic
Two attracted to light on 7th September.
- 73.255 *Anarta trifolii* Nutmeg
Singles at light on 11th August and 7th September.
- 73.263 *Lacanobia w-latinum* Light Brocade
21 attracted to light on 1st June were followed by two on 9th.
- 73.264 *Lacanobia thalassina* Pale-shouldered Brocade
A single was attracted to light in the Office Garden on 19th May.

- 73.266 *Lacanobia suasa* Dog's Tooth
A single was attracted to light in the Office Garden on 1st June.
- 73.267 *Diataraxia oleracea* Bright-line Brown-eye
One to six attracted to light on six nights between 1st June to 11th August.
- 73.274 *Mamestra brassicae* Cabbage Moth
Attracted to light on 10th (four) and 11th August (three).
- 73.279 *Hecatera bicolorata* Broad-barred White
A single was attracted to light in Home Wood on 10th August.
- 73.281 *Hadena bicurris* Lychnis
Three attracted to light on 10th August followed by a single the following night.
- 73.290 *Mythimna conigera* Brown-line Bright-eye
16 were attracted to light on 19th July followed by a single on 10th August.
- 73.291 *Mythimna pallens* Common Wainscot
Attracted to light on five nights; 1st (11) & 26th June (three), singles on 10th & 11th August and eight on 7th September.
- 73.293 *Mythimna impure* Smoky Wainscot
Attracted to light on three nights; 26th June (six), 19th July (14) and 11th August (two).
- 73.294 *Mythimna straminea* Southern Wainscot
Singles were attracted to light on 15th & 26th June and 11th August along with three on 19th July.
- 73.297 *Mythimna albipuncta* White-point
Attracted to light on nine nights between 12th May and 7th September with a peak of 22 on 11th August.
- 73.298 *Hyphilare farrago* Clay
Three attracted to light on 26th June followed by six on 19th July.
- 73.301 *Leucania comma* Shoulder-striped Wainscot
Three attracted to light on 26th June.
- 73.317 *Agrotis exclamationis* Heart & Dart
Attracted to light between 12th May and 19th July with a peak of 28 on 1st June.
- 73.319 *Agrotis segetum* Turnip Moth
Attracted to light on nine dates between 12th May and 7th September with a peak of 59 on 10th August.

- 73.320 *Agrotis clavis* Heart & Club
 A single attracted to light on 15th June followed by 11 on 26th.
- 73.325 *Agrotis puta* Shuttle-shaped Dart
 Attracted to light three nights between 12th May and 1st June with a peak of 11 on 1st June. Further records were on 10th (15) and 11th August (eight).
- 73.328 *Axylia putris* Flame
 Attracted to light on 1st (three), 15th (one) and 26th June (20).
- 73.329 *Ochropleura plecta* Flame Shoulder
 Attracted to light on eight nights between 12th May and 11th August with a peak of 79 and 63 on 10th and 11th August respectively.
- 73.336 *Cerastis rubricosa* Red Chestnut
 A single was attracted to light in Home Wood on 22nd March.
- 73.342 *Noctua pronuba* Large Yellow Underwing
 Attracted to light on eight nights between 1st June and 7th September with a peak of 19 on 7th September.
- 73.343 *Noctua fimbriata* Broad-bordered Yellow Underwing
 Attracted to light on three dates; 19th July(one) and 10th (two) & 11th August (four).
- 73.345 *Noctua comes* Lesser Yellow Underwing
 Singles were attracted to light on 19th July and 11th August followed by two on 7th September.
- 73.346 *Noctua interjecta* Least Yellow Underwing
 A single was attracted to light in Home Wood on 10th August.
- 73.348 *Noctua janthe* Lesser Broad-bordered Yellow Underwing
 Attracted to light on four dates; 19th July (one), 10th (35) & 11th August (40) and 23rd October (one).
- 73.354 *Xestia stigmatica* Square-spotted Clay
 Attracted to light on three dates; 10th (seven) & 11th August (four) and 7th September (one).
- 73.357 *Xestia xanthographa* Square-spot Rustic
 28 attracted to light on 7th September.
- 73.359 *Xestia c-nigrum* Setaceous Hebrew Character
 Attracted to light on nine dates between 19th May and 23rd October with peaks of 261, 136 and 119 on 10th & 11th August and 7th September respectively.
- 73.361 *Xestia triangulum* Double Square-spot
 Seven were attracted to light on 26th June followed by four on 19th July.

74.003 *Nola cucullatella*

Short-cloaked Moth

Two were attracted to light in the Upware North Pit SSSI on 19th July.

74.008 *Pseudoips prasinana*

Green Silver-lines

A single was attracted to light in Home Wood on 26th June.

74.011 *Earias clorana*

Cream-bordered Green Pea

Two were attracted to light on 26th June.